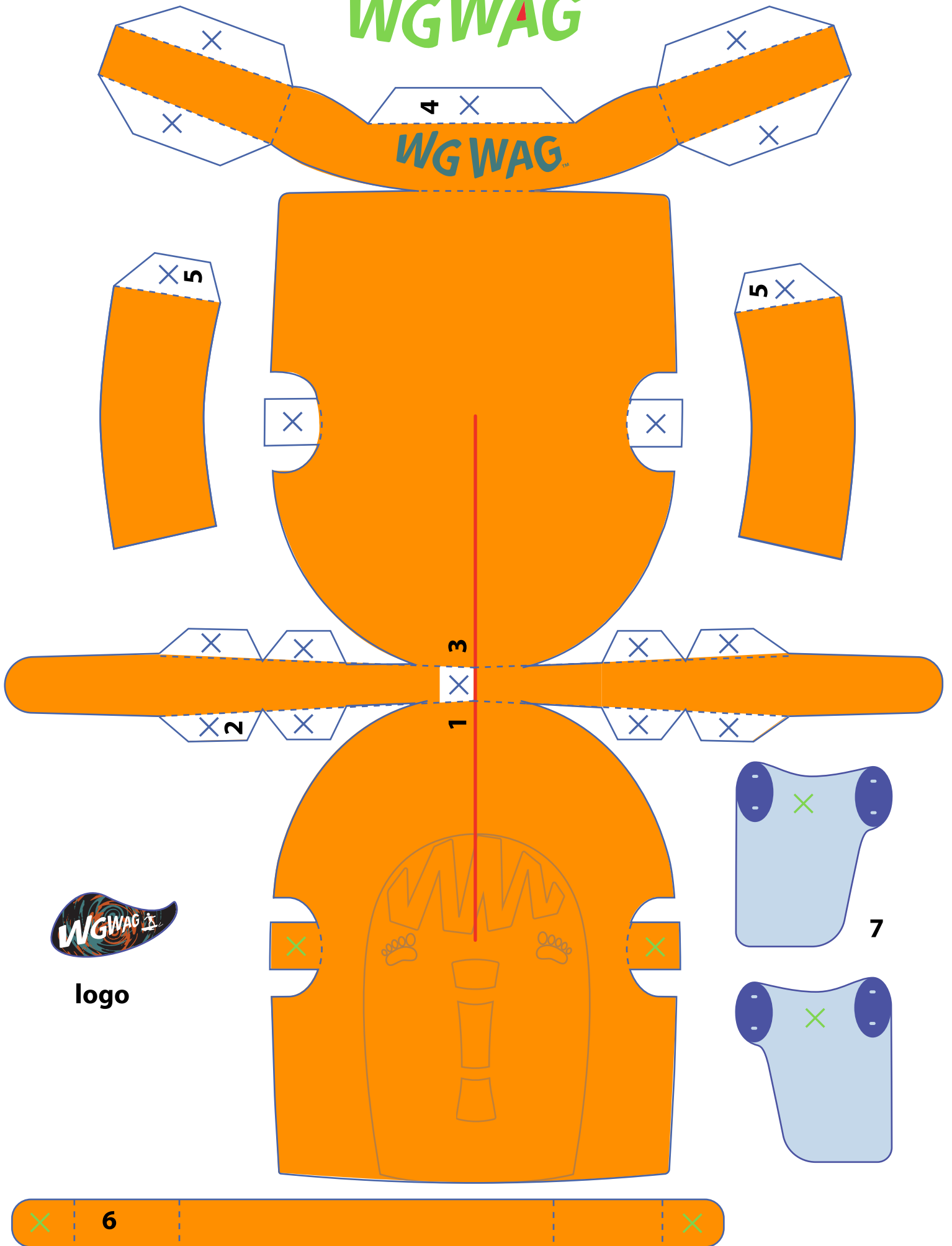
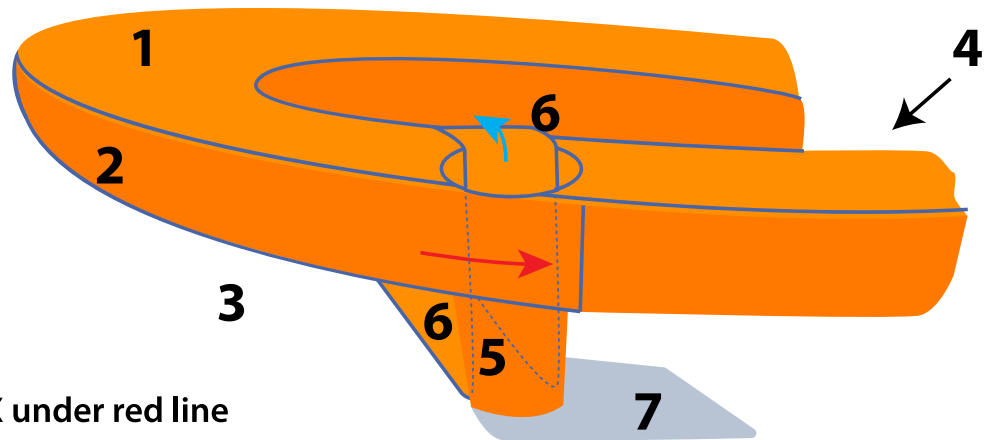


WGWAG

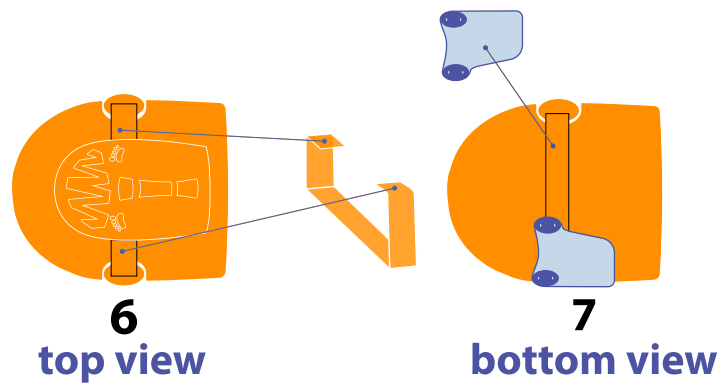
WGWAG



logo



- cut out
- cut & slide X under red line
- crease & fold
- glue here
- glue on back side



SUPPLIES: glue, scissors

For best results use cardstock (or anything heavier than copy paper.)

- Cut on blue lines & remove all pieces.
- Crease and fold on dotted lines.
- Cut red line (to do this fold paper in half so undersides of sections 1 and 3 touch).

NOTE: For the following sections, let glue dry enough to hold after each step.

- Put glue on the X between 1 and 3. Slide X under the red line until hidden and so deck of boat (section 1) sinks down and the hull (section 3) pops out.

- Curl both sides of 2 around the front of the boat, glue tabs on Xs and slide them between the top and bottom of boat.
- Center 4 on rear of boat, glue tabs on Xs and slide between the tops and bottom of boat.
- Glue side flaps down (of 1 and 3).
- For 5, roll into tubes and glue tabs. Put tubes in holes on sides of boat. Tuck loose ends of 2 around legs and into slot.
- Follow diagram for 6 and 7, threading folded ends through legs and gluing flaps to deck and then gluing fins to long flat area of orange strip.
- Glue above . Done!

From your friends at Corcl Boats!